

COMMANDER DOOR PRE-HANGING SPARE PARTS

Interior

Door Feeder

Jamb Routers

Exterior

Architectural

Patio Door Line

Entry Door Line

Automatic Saws

Pre-Fit Jamb

Bi-fold





Making Quality Door and Jamb Machinery Since 1947

INNOVATION | QUALITY | HONESTY

Order Today!
Call 1.800.553.5825

About KVAL Machinery

KVAL was started in the mid 1940's by AA Kvalheim. A Norwegian trained furniture maker, who turned to cabinetmaking and carpentry, and eventually machinery manufacturing after immigrating to the United States. One product produced in the mid 40's was a panel saw which helped expand the fledgling flush door industry that was developing around the Walled Lake, Michigan area. Early door sizing systems were supplied to companies like Young Door, Walled Lake, Arrow Door, and out on the west coast to Cal Wood Door.

In the mid 1950's, sons Andy and Irv Kvalheim joined in the business. As the company grew, so did the line of products. Door pre-hanging equipment was designed for distributors and high production equipment was designed for manufacturers producing pre-fit units. During the growth years of the 60's, the company continued as an innovator in the industry with automatic machines for jamb processing, casing trimmers and updated door sizers. As the 70's began, customers began demanding even more automation to cut labor costs and improve product quality. Kval responded with bi-fold door assembly and pre-hanging machines featuring fully automatic screw driving systems.

Today, Jerry, David, and Mark Kvalheim...the three grandsons of AA Kvalheim have joined the firm. The company family has also grown to include George Kameoka as head engineer, and Mark Smith as one of the managing partners.

KVAL products have continued to evolve and are now faster than ever, but are easier to set up, and produce higher quality doors than ever before. Recent technical innovations include CNC controls and the complete replacement of air logic control systems with solid state programmable controllers. Fully automatic positioning and sequencing for door and jamb equipment. Digital readouts with touchscreen controls to guarantee accurate setup and operation. When looking for quality door, jamb, casing, and related machines, look to the leader in the industry for over six decades!

Look to KVAL!!!



© KVAL Inc. All rights reserved

This document may not be copied, photocopied, reproduced, transmitted, or translated in any form or for any purpose without the express written consent of KVAL Inc.

KVAL Inc. reserved the rights, without notice, to change design and construction of any products.

Price are subject to change without notice.

Errors in description, photography, or typographical errors are subject to correction.

Printed in the United States of America
Published on 3/26/2014

To see our full line of products,

go to kvalinc.com and type in

Commander

Find

Commander

Commander

The Commander is the most flexible door processing center. It's a fully automatic cylindrical lock and hinge machine that sets a new standard for versatility and flexibility. It is the logical choice for door pre-hangers producing interior and exterior doors up to 8' high. Yet, at the same time, it's the perfect machine for architectural door distributors matching doors to steel door frames. In pre-hanging shops, a single operator typically produces 250 or more doors per shift, including lock prep and hinge mounting to door and hinge jamb. A second operator following the Commander completes the unit by fastening the header and strike jamb. For architectural distributors the Commander rapidly adjusts to whatever specifications your orders require. In a matter of moments the machine can even be adjusted from pre-hanging residential doors to machining architectural doors measuring up to 2-1/4" thick x 4' x 9' requiring four 1/4" radius hinges at three degree bevel. Changeover time is held to an absolute minimum with pre-set turrets, plug-in hinge positioning shafts, and electronic control of the hinge routing pattern. Popular options include feed belts to position doors automatically, a pre-drill head for hinge screw holes, and additional stations described in the next section to add door feeding, beveling and frame nailing.

SPECIFICATIONS:

Footprint Size: 14.5'L x 9'W

Crated Dimensions: 165"L x 82"W x 67"H

Shipping Weight: 5,000 lbs.

Commander Video





Tooling



990F, Front, Predrill Extended Chuck Key with Chuck Key

KVAL P/N: 12-00-100



Wrench for the Acuraflex Nut
Material: CRS
Stock Size: 1/4 X 2 X 10-1/2
KVAL P/N: 15-00-ER32



Pump Wrench, 1-5/8" Thin Pattern

KVAL P/N: WRENCH026



3-Wing Router Bit 2-1/8" Dia Carbide Tipped with a 1/2" Shank

KVAL P/N: 3WB34-CT



Cover Nut, ACU 9400005

KVAL P/N: ACU940005



Collet, 1/2-3/4 Capacity

KVAL P/N: ACUAF122



Collet, 1/2", 1 and 2 HP, Perske Motors and 1.5 HP Colombo motor.

KVAL P/N: PERER20-1/2



Chuck 5/16-24 Thread Mount 0-5/32 Capacity

KVAL P/N: JACOB



Arbor 1/2 Dia Shank X 4 Long 1/4-28 Thread

KVAL P/N: KVARBOR24



Chuck Tapered 1"

KVAL P/N: KVASC0032



Chuck Tapered 7/8"

KVAL P/N: KVASC0028



Cover Nut, ER20 (1/2) Collet Used on 1 HP and 2 HP Perske Motor.

KVAL P/N: PERER20C



Router Bit, Spin On, 1-1/4" Dia, 1/4-28 Thread

KVAL P/N: RBSO1250-4



Router Bit, Spin On, 1/2" Dia, 1/4-28 Thread, Reverse Helix, KV55253

KVAL P/N: RBSO500



Drill Bit, High Speed Steel, 1/8 Stub Length



Twist Drill, 1" Dia, 4" Twist, Brad Point, Carbide Tipped, 1/2" Shank, 6" OAL.

KVAL P/N: TD1664-BPCT

To see our full line of products,

go to kvalinc.com and type in

Feed & Frame

Find

Commander

Tooling



Router Bit, 2-Stage Drill, 1-5/8" Dia. 3 Wing Bit, 2-1/8" Dia Mutli Spur Bit, Carbide Tipped, 5/8" Shank X 8
KVAL P/N: 2SD26-34-8



Collet, 5/8-3/4 Capacity
KVAL P/N: ACUAF130



Arbor 1/2 Dia Shank 1/4-28 Thread 2-1/2 OAL (BOS82818).
KVAL P/N: KVARBOR18A

Lubrication



Hydraulic Oil, 1 Gal Container
KVAL P/N: SYSLUBG



EP 2 NLGI Grease 14 oz. Cartridge, Chevron
KVAL P/N: LUBE-EP



Silicone Spray 10 Oz Lubricant.
KVAL P/N: DAY2X988B

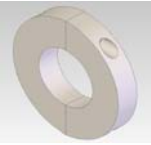


Includes: Syslub, Multi-FAK Grease, Grease Gun, Adapter Needle Nozzle, 8" Grease Gun Extension, Silicone Spray.
KVAL P/N: LUBEKIT



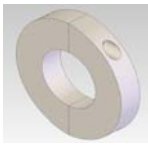


Feed & Frame



Inner Drive Spacer For The Feed System

KVAL P/N: 125A



Outer Drive Spacer For The Feed System

KVAL P/N: 125A



Directional Control Valve PMD-4
1/8" NPT 4-WAY Detented (Push-Pull)

KVAL P/N: FAB18PMD4



Safety Exhaust Ball Valves; NPT Thread: 1/4"

KVAL P/N: BBVALVE04



Washer, 1/4-ID 7/16-OD 1/32 Thick

KVAL P/N: WSHR1432



Washer, 1/4-ID 7-16OD 1/64 Thick

KVAL P/N: WSHR1464-.375



Motor, 3/4 HP, 1750 RPM, 90 Volt DC TEFC
56C, Permanent Magnet SCR Drive

KVAL P/N: BACDP3440



Pulley, Gearbelt, BK55H, Single Sheave 5"
OD Tapered Bore, Modified

KVAL P/N: BROBK55HX



Motor, 3/4 HP, 1750 RPM, 90 Volt DC TEFC
56C, Permanent Magnet SCR Drive

KVAL P/N: BAL3440BR



Pulley, BK55H Pulley Single Sheave 5-OD
1.997 Bore W/Oil-Lite (Modified) (Auto
Feed).Hex Pulley

KVAL P/N: BROBK55HY



Motor 1/3 HP 1725 RPM TEFC 56C 208-
230/460

KVAL P/N: BALCM3534



Coupler, 1" Dia. Bore Sleeve 3" Long with
Keyseat, CS 16 K

KVAL P/N: BROCS16K



Motor, Inverter Duty, 3/4 HP, 17525 RPM,
56C, 3 Phase 460/230V

KVAL P/N: BALIDNM3542



Taper Bushing, Split, 4016 X 1 Bore

KVAL P/N: BROH16



Motor 3/4 HP 1140 RPM TEFC 56C 208-
220/440 Volt

KVAL P/N: BALVM3543



Idler Shaft, 1" Dia, 4-3/8" OAL, 3/4-10 Thread

KVAL P/N: BRON3

To see our full line of products,

go to kvalinc.com and type in

Feed & Frame

Find

Commander

Feed & Frame



Commander, Feed, Torque Limiter Shaft,
FMS, 1" Dia. X 4-1/2"

KVAL P/N: 11-00-F6



Gripbelt A31 33.2" Outside Length

KVAL P/N: BLTA031



Pulley, Single Sheave Belt Pulley Assembly

KVAL P/N: 604A



Gearbox, 90 Degree 1:1 Ratio, 1" Bore RH
Float-A-Shaft

KVAL P/N: BRA4304-0344



Photo Eye Blowoff Kit; Includes (1)
HUMBF1, (1) HUMSEF, (1) HUMBF, (2)
NUTCJ375, and (1) 236C (1-1/2 LG Thread).

KVAL P/N: 90F3-003



Sprocket, 4014 X 1 Bore

KVAL P/N: BRO401406



To see our full line of products,

go to kvalinc.com and type in

Feed & Frame

Find

Commander

Pre-Drill



990F, Front, Predrill Extended Chuck Key with Chuck Key

KVAL P/N: **12-00-100**



3-position, 3-way, normally closed, detented valve, single direction throw with pinned fever.

KVAL P/N: **12-00-100**



Drill Bit, High Speed Steel, 1/8 Stub Length



Air Motor, 1-3/4 HP, 4Z231, Modified 5/8 Dia. X 7/8" Long Output Shaft

KVAL P/N: **DAY4Z231MOD**



Chuck 5/16-24 Thread Mount 0-5/32 Capacity

KVAL P/N: **JACOB**



Adjustable Kip Handle
5/16-18 Thread x 1.77 Stud

KVAL P/N: **KIP38155**



1-1/8-OD X 13/16-ID X 2-7/8 Long Spring for Commander Pre- Drill

KVAL P/N: **360228A**



Pre-Drill Handle Bar Grips, Black, 5" Long

KVAL P/N: **BIKEGRIP**



Radial Ball Bearing, R6, 3/8" Bore

KVAL P/N: **PAC77R06**



Radial Ball Bearing, R6, 3/8" Bore

KVAL P/N: **HUM250A01**



3-way, normally closed, spring-return valve

KVAL P/N: **HUM3P**



Chuck Shaft With Gear (PREDRILL)
5/16-24THD YSS1614 GEAR.

KVAL P/N: **SSPDCS002**



Frame & Feed



Torque Limiter, 7/8 Bore, With 40A20G Sprocket, Assembled and Burned In

KVAL P/N: DALOSD256-1A



Dayton Brake Magnetic Disc for C-Face Motors, 6K233

KVAL P/N: DAY6K233



Shuttle Valve, 1/8", SV10B, NPT, Deltrol

KVAL P/N: DELSV10B



Toggle Clamp, Model 56040, 4-3/4" Long, 5/16-18 Female Thread

KVAL P/N: DES604



Bearing, FB 160 X 1", 2 Hole Mount, Setscrew Locking Relube

KVAL P/N: HUBFB1603



Bearing, FB 260 X 1", 2 Hole Mount, Setscrew Locking Relube.

KVAL P/N: HUBFB2603



Bearing, Pillow Block, PB 250 X 1, Setscrew Locking Relube.

KVAL P/N: HUBPB2503



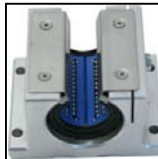
Bearing, Pillow Block, TPB 250 X 1, Tapped Base Setscrew Locking Relube.

KVAL P/N: HUBTPB253



Valve, Humphrey, Air Piloted 501A-3-12-20, 1/2 Ports, 275 CFM AT 125 PSI 2&3WAY,N/0&C

KVAL P/N: HUM501A



Bearing, 1" Open Super Linear Pillow Block

KVAL P/N: INASPB160



Bearing, 1-1/2" Open Super Linear Pillow Block

KVAL P/N: INASPB240



Wheel, 3" Dia. X 1-1/4" Wide 3/8" ID Wheel With Simi Precision Roller Bearing

KVAL P/N: INDXS0303106



Flanged Ball Bearing F-165 7/8 OD, 5/16 Bore, Style 47.

KVAL P/N: KILF16500



Chain, Connecting link, 40 Chain

KVAL P/N: LIN400001



LoveJoy, L095 Coupling Body, 1" Bore, Part of 3 Piece Flexible Coupling

KVAL P/N: LOVL09516



Rod End Male, TRE-6, 3/8 Bore, 3/8-24 Male Thread Shank End

KVAL P/N: RODEND06M

To see our full line of products,

go to kvalinc.com and type in

Frame & Feed

Find

Commander

Frame & Feed



Ruler, 1-1/2" x 38", Plastic Adhesive backed reading Left to Right 16-52, White/Green/Red Graphics, 1" blank at Ends, Top Coated.
KVAL P/N: RULE1652



Valve, VQC4100-5 or VQC4101-5 SMC Valve W/O Base Single Acting 24VDC.

KVAL P/N: SMCVQC4100-5



Split Collar, One Piece, 1" Dia., Steel

KVAL P/N: SC116F



Hytrel Spider or Connector for the 090 and 095 Series Flexible Couplings.

KVAL P/N: SPIDER005-H



Regulator, 1/4" Mini With Check Valve (1/8" Body with 1/4" Ports)

KVAL P/N: SMC20001R



Polyurethane Belting, Flat Top Orange V-Belting 5/8 Top Width B Section

KVAL P/N: VBELTFT10



Filter, 1/2" With Auto Drain

KVAL P/N: SMC40004F



Polyurethane Belting, Wing Top Orange V-Belting 5/8 Top Width B Section

KVAL P/N: VBELTWT10



Lubricator 1/2".

KVAL P/N: SMC40004L



Green Polytube Wheel 2 Dia X 3/4 Wide 7/8-ID 60 Duro

KVAL P/N: WESPT5112



Regulator 1/2"

KVAL P/N: SMC40004R



Green Polytube Wheel 2 Dia X 7/16 Wide 7/8-ID 60 Duro

KVAL P/N: WESPT5107



Regulator, SMC, 1/2" NPT Port With Back-flow Mechanism With Gauge

KVAL P/N: SMC40004R-K



Green Polytube Wheel 1-1/2 Dia X 7/16 Wide 7/8ID 60 Duro.

KVAL P/N: WESPT3822



Pressure Gauge, SMC, K40, 1/8 NPT Thread, 160 PSI

KVAL P/N: SMCK10



Track Your Order Online at STORE.KVALINC.COM



Back Section



Wrench for the Acuraflex Nut
 Material:CRS
 Stock Size:1/4 X 2 X 10-1/2
KVAL P/N: 15-00-ER32



Motor, 5-HP, 3450 RPM, Machined with Taper
 184T Frame With Seal 400281, 208/230-440V,
 60 HZ
KVAL P/N: BALM36K887X100S



T-Handle, for Lock Collar, 1/4-28, Thread.

KVAL P/N: 403A



Cylinder, Bimba 090.5D 1/2 Double Acting
 Front Nose Mount 1-1/16 Bore

KVAL P/N: BIM090UD



Pulley, Single Sheave Belt Pulley Assembly

KVAL P/N: 604A



Cylinder, Bimba 1212DP 12" Double Acting
 Rear Pivot Double End Mount 1-1/4 Bore. Air
 Return

KVAL P/N: BIM1212DP



Cover Nut, ACU 9400005

KVAL P/N: ACU940005



Cylinder, Bimba 122DP 2" Double Acting
 Rear Pivot Double End Mount 1-1/4 Bore.

KVAL P/N: BIM122DP



Collet, 1/2-3/4 Capacity

KVAL P/N: ACUAF122



Cylinder, Bimba 123D 3" Double Acting Front
 Nose Mount 1-1/4 Bore.

KVAL P/N: BIM123D



Pump Wrench, 1-5/8" Thin Pattern

KVAL P/N: WRENCH026



Cylinder, Bimba 2416DP 16" Double Acting
 Rear Pivot Double End Mount 1-3/4" Bore.

KVAL P/N: BIM2416DP



Cylinder, Advance, Hydraulic, 490 X 5"

KVAL P/N: ADV490H1R



Cylinder, Bimba 241DP 1" Double Acting
 Rear Pivot Double End Mount 1-3/4 Bore.

KVAL P/N: BIM241DP



Motor, 3-HP, 3450 RPM, Machined with Taper
 145T Frame, 208/230-460V, 60 HZ,
 35R202T123
KVAL P/N: BALM35R202T123



Cylinder, Bimba 242DXDE 2" Double Acting
 Double End Rod Mount 1-3/4 Bore.

KVAL P/N: BIM242DXD

To see our full line of products,

go to kvalinc.com and type in

Back Section

Find

Commander

Back Section



Cylinder Hardware, Bimba 240 Foot Mount Bracket 1.037 Bore, 3" Long Slotted Base

KVAL P/N: BIMC1337



Toggle Clamp, Model 56040, 4-3/4" Long, 5/16-18 Female Thread

KVAL P/N: DES604



Cylinder, Bimba, Hardware, 2 Piece Pivot Bracket, .250 Bore 2.12 Slotted Base

KVAL P/N: BIMD1360



Cylinder, Fabco Pancake D-121-X 1/2 Stroke, 1-1/8 Bore

KVAL P/N: FABD121X



Cylinder, Bimba, Hardware, 120,170 Foot Bracket .75 Bore 2.50 Long Slotted Base

KVAL P/N: BIMD241



Cylinder, Fabco Pancake E-121-X 1" Stroke, 1-1/8 Bore

KVAL P/N: FABE121X



Cylinder, Bimba, Hardware, 2-Piece Pivot Bracket .375 Pin 2.88 Long Slotted Base

KVAL P/N: BIMD6201



Cylinder, Fabco Pancake, Hardware, RC-31 Rod Clevis For 121 Series

KVAL P/N: FABRC31



Gearbelt Pulley, 22 Groove, 3.447 O.D., 22HH100, Use H Bushing

KVAL P/N: BRO22HH10



Cylinder, Fabco Pancake, Hardware, RC-38, Rod Clevis For 221 Series

KVAL P/N: FABRC38



Idler Shaft, 1" Dia, 4-3/8" OAL, 3/4-10 Thread

KVAL P/N: BRON3



Cylinder, Stroke Pancake X-121-X 3/4 1-1/8 Bore Fabco.

KVAL P/N: FABX121X



Chipout, Back Section Lock Bevel Material: Ryertex Stock Size: 5/16 X 3-1/2 X 4

KVAL P/N: CHIPOUT05



Sleeve Valve, 1/4", 3-Way

KVAL P/N: FOS3W250



Commander, Lock Location Pointer

KVAL P/N: COM-001A



Hairline Pointer, Plastic

KVAL P/N: HLPOINTR1





Back Section



Bearing, Pillow Block, TPB 250 X 1, Tapped Base Setscrew Locking Relube.

KVAL P/N: HUBTPB253



Air Piloted Valve, Humphrey 250A-3-10-20, Normally Closed 1/4" (6.4mm), 3-Way Pilot

KVAL P/N: HUM250A01



Valve, Humphrey, 3-Way Toggle 2-Position Normally Closed, Detented Valve.

KVAL P/N: HUM3V



Valve, Humphrey, Hardware, 8-20A Mounting Base for HUM250A01 & HUM250A02

KVAL P/N: HUM820A



Bearing, 1-1/2" Open Super Linear Pillow Block

KVAL P/N: INASPB240



Bearing, Modified KGXO-24PP 1-1/2" Open Super Linear Pillow Block

KVAL P/N: INASPB240M



Handle, Kip 5/16-18 Thread, 2.72 Stud Adjustable Handle GN300-63

KVAL P/N: KIP38158-BS



Linear Bearing Block, With Standard 3/4" Bearing & 2 Seals, 2" Long, 1-1/2" Square

KVAL P/N: KVALBB12A



Linear Bearing Block With Standard 1 Bearing & 2 Seals 2-3/4 Long 2 Square.

KVAL P/N: KVALBB16A



Linear Bearing Block, With Steel Linear Ball Bearing, 1" Dia., 2 Seals & Zirk Fitting Hole, 2-3/4" Long 2 Square.

KVAL P/N: KVALBB16B



Chuck Tapered 7/8"

KVAL P/N: KVASC0028



Chuck Tapered 1"

KVAL P/N: KVASC0032



Shock Absorber, Gas Operated, Kayaba, KG5406

KVAL P/N: KYBKG5406



Reservoir Hydraulic, Monnier, 2-1750

KVAL P/N: MON21750



Split Collar, One Piece, 3/4" Dia., Steel

KVAL P/N: SC112F



Split Collar, One Piece, 1" Dia., Steel

KVAL P/N: SC116F

To see our full line of products,

go to kvalinc.com and type in

Back Section

Find

Commander

Back Section



Split Collar, Two Piece, 1" Dia., Steel

KVAL P/N: SC216F



Pressure Gauge, SMC, K40, 1/8 NPT Thread, 160 PSI

KVAL P/N: SMCK10



Regulator, 1/4" Mini With Check Valve (1/8" Body with 1/4" Ports)

KVAL P/N: SMC20001R



Valve, SMC 4-Way Single Pilot With 1/4 Base

KVAL P/N: SMCNVSA03



Regulator, Bracket, 1/4" Mini

KVAL P/N: SMC20001Y



Valve, VQC4100-5 or VQC4101-5 SMC Valve Without Base, Single Acting 24VDC.

KVAL P/N: SMCVQC4100-5



Speed Controller, In-line, 1/8"

KVAL P/N: SMCAS2001



Valve, VQC4200-5 SMC Valve Without Base, Double Acting, 24VDC

KVAL P/N: SMCVQC4200-5



Speed Controller, Standard, 1/4" Right Angle, 1/4 NPT, Metal Body Elbow Style

KVAL P/N: SMCAS2102



Valve, SMC 4-Way Without Base.

KVAL P/N: SMCNVS401



Speed Controller, One-touch Fitting, 1/8 NPT - 1/4" OD, Elbow & Universal Types, NAS2201F-N01-07S

KVAL P/N: SMCAS2201F1



Speed Controller, One-touch Fitting, 1/4 NPT - 1/4" OD, Elbow & Universal Types, NAS2201F-N02-07S

KVAL P/N: SMCAS2201F2



Speed Controller, One-touch Fitting, 1/8 NPT - 1/4" OD, Universal Types

KVAL P/N: SMCAS2301F



Track Your Order Online at STORE.KVALINC.COM



Front Section



Commander, H-Block, Door Support, CRS,
1/4" X 1/2" X 9"

KVAL P/N: 11-00-E02A



Cylinder Hardware, Bimba, Clevis,
240,310,050,1/2-20 National Fine Thread 1.69
Long .38 Pin.

KVAL P/N: BIMD2313



Commander, H-Block, Exterior Jamb Stop
Weldment

KVAL P/N: 11-00-E05-0



Bearing, Modified, 1" Open Super Linear Pil-
low Block

KVAL P/N: COM9-18



Commander, H-Block, Brass Plug, 0 Deg, 3/4
Dia X 1/8

KVAL P/N: 11-00-E07



Cylinder, Fabco, Stack Assembly, Commander
Hinge Section

KVAL P/N: FAB-A003



Commander, Brass Plug, Option K, Brass 3/4
Dia X 7/16

KVAL P/N: 11-0K-I



Cylinder, Fabco Pancake, Hardware, RC-38,
Rod Clevis For 221 Series

KVAL P/N: FABRC38



Spring, 7/16" OD X 5/16" ID X 3-1/2"
Long, .054 Wire With Hooked Ends

KVAL P/N: 140316H



Cylinder, Stroke Pancake X-121-X 3/4 1-1/8
Bore Fabco.

KVAL P/N: FABX121X



Cylinder, Bimba 121D 1" Double Acting Front
Nose Mount 1-1/4 Bore.

KVAL P/N: BIM121D



Bearing, 1" Open Super Linear Pillow Block

KVAL P/N: INASPB160



Cylinder, Bimba 125D 5" Double Acting Front
Nose Mount 1-1/4 Bore.

KVAL P/N: BIM125D



Bearing, 3/4" Closed Super Linear Pillow
Block

KVAL P/N: INASPBC120



Cylinder, Bimba 502D 2" Double Acting Front
Nose Mount 2-1/2 Bore

KVAL P/N: BIM502D



Handle, Kip 3/8-16 Thread, 1.56 Stud, Adjusta-
ble

KVAL P/N: KIP38254

To see our full line of products,

go to kvalinc.com and type in

Front Section

Find

Commander

Front Section



Radial Ball Bearing, R6, 3/8" Bore

KVAL P/N: PAC77R06



Thrust Bearing, NTA-1625, 1" I.D. X 1-9/16 O.D.

KVAL P/N: TORNTA162



Valve, SMC Single Solenoid/ Pilot Spring Ret Without Base (Mini) 4-Way (Model VZ2150).

KVAL P/N: SMCNZ4101



Pigtail 40 For NZ SMC Valve Mini Valve, 110V

KVAL P/N: SMCNZ440P



Knob, DK-6, Fluted, 2-3/8" Dia Knob 3/8-16 Threaded 2" Long Stud.

KVAL P/N: REIDK06





Jamb Clamp



Commander, Jamb, Redi-Rod, 5/16-24 X 2" Lg

KVAL P/N: 11-00-D13



Pad, Delrin 1" Dia X 7/16" NF Thread

KVAL P/N: P161607FD



Cylinder, Bimba 124DP 4" Double Acting
Rear Pivot Double End Mount 1-1/4 Bore.

KVAL P/N: BIM124DP



Pad, Felt, 2" Dia X 1/8"

KVAL P/N: P320200-F



Air Hose, 5 Bonded Coiled Hose, 10 FT, Tube
1/4", With 8" Tails, Stacked Configuration

KVAL P/N: BUCM29720



Pad, Aluminum 2" Dia X 5/16 Thick

KVAL P/N: P320505-A



Cylinder, Stroke Pancake G-121-X 1-1/2 Cyl-
inder, Bore Fabco 1-1/8.

KVAL P/N: FABG121X



Knob, DK-83, 4-Prong (1-1/4 Dia) 1/4-20 X
7/16 Deep Blind Hole Brass Insert.

KVAL P/N: REIDK83



Pad, Delrin 1" Dia X 1" 5/16" NF Thread

KVAL P/N: P161605FD



Super Weatherstrip Adhesive Black 5 Oz.

KVAL P/N: DUN8008

To see our full line of products,

go to kvalinc.com and type in

Contactors & Relays

Find

Commander

Electrical

Contactors & Relays



Contactor, 3 Pole, 120 Volt Coil Quick Connect and Screw Terminals for Coil.

KVAL P/N: 42BF35AFCBK



Finder 3PDT 120V 11 Pin Relay Indicator Light Button

KVAL P/N: 60.13-RELAY



Auxiliary Contact, 1-NC for Series 42 Definite Purpose Contactors.

KVAL P/N: 49ACRC



Thermal Overload Relay, Class 10 7-10A

KVAL P/N: CGT-22-10



MM23001C DC Drive Vari Speed Control SCR Adj. Speed Drives for DC Brush Motors

KVAL P/N: MM23001C

Disconnect



Disconnect Shaft Stromburg 3/16" X 3/16" X 10-1/2" OAL

KVAL P/N: OETLZS49



Disconnect Switch, 80 Amp, 3 Poles, ABB, OT80F3, 1SCA105798R1001

KVAL P/N: OT80F3



Pistol Handle, Red/ Black, Nema 1, 3R, 12 Accepts 6mm SQ Shaft, 65mm Handle Pad-lockable

KVAL P/N: OHB65J6



Disconnect 6mm Shaft, 290mm long.

KVAL P/N: OXP6X290

Limit Switch & Arms



Limit Switch Arm, Wide Wheel, 2" Radius with 11/16 DIA X 11/16 Wheel

KVAL P/N: WL1A200





Electrical

Motors



Motor, 3-HP, 3450 RPM, Machined with Taper 145T Frame, 208/230-460V, 60 HZ, 35R202T123
KVAL P/N: BALM35R202T123



Router Perske, 1 HP, 18,000 RPM, 220/380 Volts 300 HZ, 1/2 Collet Capacity. Includes Wrenches
KVAL P/N: PERKRS35.1-2D

Sensors



Sensor, Fixed Range, 2" Fixed Field, 24 Volts DC, 18MM Dia
KVAL P/N: DIFUSEFF2-M12



Diffuse Photo Eye 24 Volts DC 100MM Range M12 Quickconnect 18MM Dia.
KVAL P/N: PHOTO-M12



Cord M12 Conn 4 Wire DC 5 Meters
KVAL P/N: M12-4PIN-DC-5M



Sensor, 18mm Dia. Shielded Prox M12, Conn Turck BI5-M18-AN6X-H1141, 36mm Threaded Barrel 51mm OAL.
KVAL P/N: PROX18DC-M12-SHORT

To see our full line of products,

go to kvalinc.com and type in

Switches & Lights

Find

Commander

Electrical

Switches & Lights



Chicago Miniature 120V Neon Amber Indicator, 6010QM3

KVAL P/N: IDI-6010QM3



Light, Chicago Miniature 24V Green Led Indicator, 6091QM5-24

KVAL P/N: IDI-6091QM5-24



Pushbutton Contact Square D 1-NO Green

KVAL P/N: KA2



Pushbutton Contact Square D 1-NC Red

KVAL P/N: KA3



Pushbutton Non-Illuminated, Momentary, Green Button, 1 N.O Contact, Type: K, Size: 30mm, 10A, 600V, Square D

KVAL P/N: KR24GH36



Pushbutton Illuminated, Maintained (Push/Pull), 2 Position, Green Button, 1 N.C. Contact, Type: K, Size: 30mm, 10A, Square D

KVAL P/N: KR9P1GH14



Selector Switch Non-Illuminated, Maintained, 3 Position, Blue Knob, 2 N.O. Contact, Type: K, Size: 30mm, 10A

KVAL P/N: KS42FLH7





Chipouts



Chipout, Back Section Lock Bevel
 Material: Ryertex
 Stock Size: 5/16 X 3-1/2 X 4
KVAL P/N: CHIPOUT05



Chipout, Commander, Front Section
 Material: Ryertex
 Stock Size: 3/4 X 1 X 8.
KVAL P/N: CHIPOUT30



Back Section, Lower Drill Box Chipout With
 Function Hole Drill Option

KVAL P/N: CHIPOUT49A



Chipout, Commander, 1996+, Hinge Pass
 Through Hinge Pocket, 7" Centers; Material:
 Ryertex; Stock Size: 3/8 X 1/2 X 8-1/2
KVAL P/N: CHIPOUT39B



Upper Chipout Block, For 2-3/8", 2-3/4" and 5"
 Backset Manual Shift. On Back Section

KVAL P/N: CHIPOUT06

Safety Labels



Label, Danger, Read and Understand Instruc-
 tion Manual, Label For All KVAL Machines.

KVAL P/N: LABELKVAL11



Label, Caution, Eye Protection Required
 2.75 X 1.35

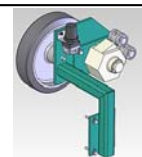
KVAL P/N: LABELKVAL39L



Label Notice Shut Off Machine when Unat-
 tended " 3-1/2 X 5 Vinyl Decal

KVAL P/N: LABELQS3028

Upgrades



Mfg, Commander, Power Shift Assist Upgrade,
 Air operated X movement on the back section.

KVAL P/N: 11-00-UPK40



Mfg, Back Section, Upgrade, Bolt Plate Router
 Assembly, Includes Bosch 1617 Router mount-
 ed on base w/4 KVALBB12A Bearings.

KVAL P/N: 15-00-UPK11



Mfg, Commander, Upgrade, (4) Three Degree
 "H" Block Assemblies With (1) Left Hand &
 (1) Right Hand Stop.

KVAL P/N: 11-00-UPK9



Porter Cable, Router, Model 7519, 3-1/4 HP
 with Modified Base & Adapter Plate, Soft Start
 15 Amps AC only, 1/2" Collet, 21,000 RPM
KVAL P/N: POR7519M1

Billing Address

Company: _____
Your name: _____
Address: _____
City/State/Zip: _____
Phone: _____

Shipping Address

Company: _____
Your name: _____
Address: _____
City/State/Zip: _____
Phone: _____

[illegible]

Shipping Preference

<input type="checkbox"/> UPS Next Day Early AM	<input type="checkbox"/> FedEx Priority Overnight
<input type="checkbox"/> UPS Next Day	<input type="checkbox"/> FedEx Standard Overnight
<input type="checkbox"/> UPS 2nd Day	<input type="checkbox"/> FedEx 2nd Day
<input type="checkbox"/> UPS 3 Day Select	<input type="checkbox"/> FedEx Express Saver
<input type="checkbox"/> UPS Ground	<input type="checkbox"/> FedEx International Priority
<input type="checkbox"/> Common Carrier	<input type="checkbox"/> FedEx International Standard

Remember: UPS requires a street address

Total \$ _____

Sales Tax and Shipping Charges
to be determined

Thanks for your order!
We appreciate your business!

Payment Method

____ C.O.D (Collect on Delivery) ____ Established Account (PO# _____) ____ Credit Card*

*If Credit Card is chosen, please complete the information below.

☐ VISA ☐ MasterCard ☐ American Express

Card Number: _____ VISA

Cardholder's Name: _____

Expiration Date: _____

Card Validation Value (CVV): _____ (VISA/MasterCard - 3 digit/American Express - 4 digit)

Signature _____ Date _____



KVAL Inc. • 825 Petaluma Blvd. So. • Petaluma, CA 94952

PHONE: 1-800-553-5825 | FAX: 1-707-762-0485 | WWW.KVALINC.COM | E-mail ORDERS@KVALINC.COM



Parts Department

**Monday thru Thursday
6:00 a.m. to 4:00 p.m. Pacific Time**

**Friday
6:00 a.m. to 1:00 p.m.**

Email: orders@kvalinc.com

WWW.KVALINC.COM



Published on 3/26/2014